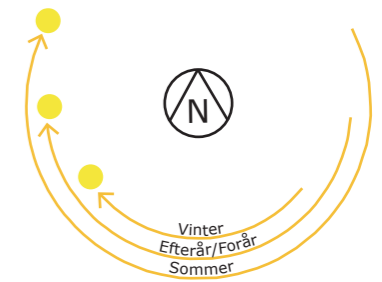


# SUNDS KLUBHUS

TIL/Ombygning  
14.04.2020  
Sag 18008

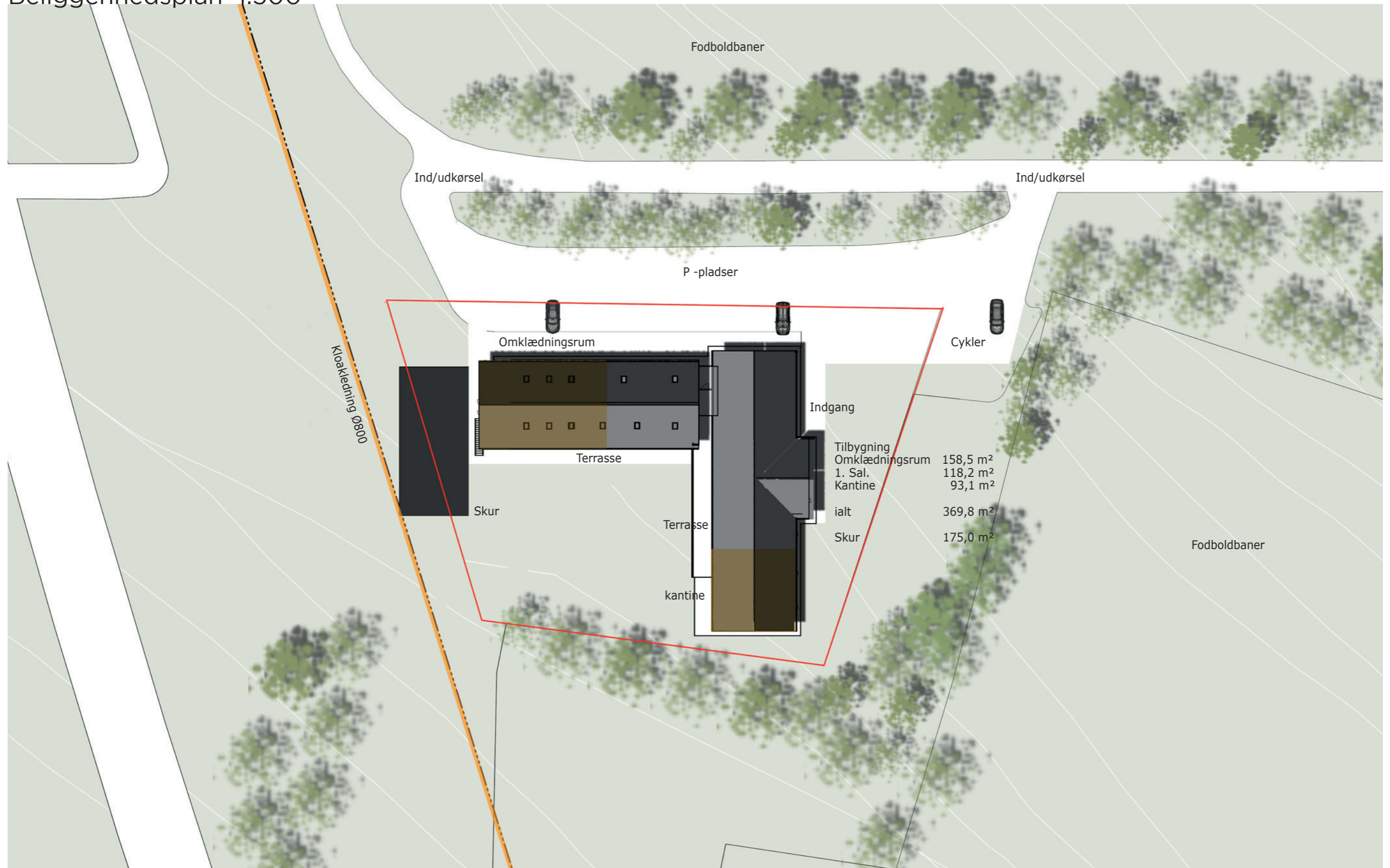
Eksisterende forhold 1:150	3
Beliggenhedsplan 1:500	4
Stueplan 1:200	5
Fremtidige forhold set fra nordvest	6



Eksisterende forhold 1:150

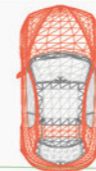
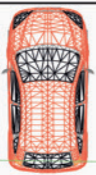
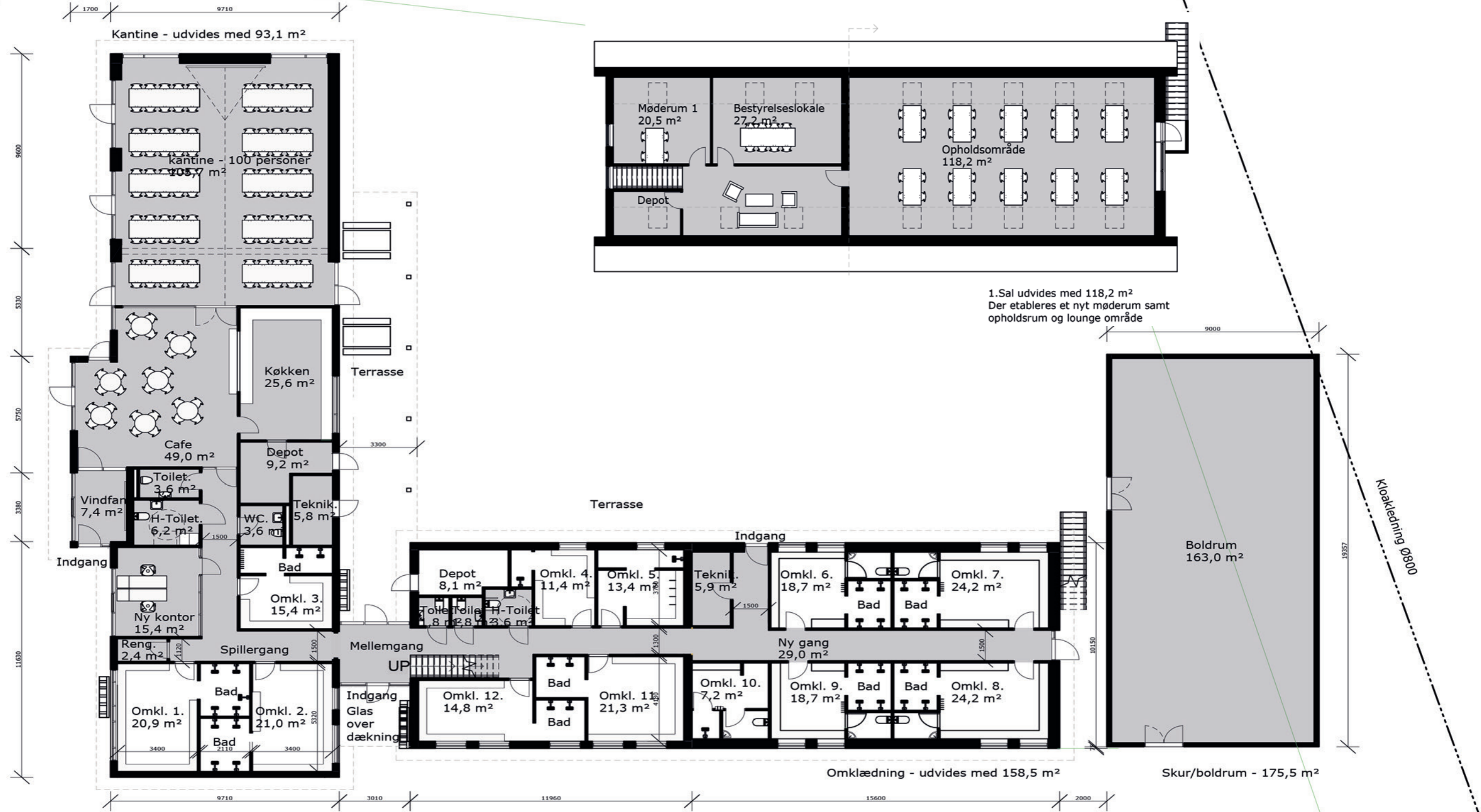


# Beliggenhedsplan 1:500



Tilbygning	
Omklædningsrum	158,5 m <sup>2</sup>
1. Sal.	118,2 m <sup>2</sup>
Kantine	93,1 m <sup>2</sup>
<b>Ialt</b>	<b>369,8 m<sup>2</sup></b>
Skur	175,0 m <sup>2</sup>

# Stueplan 1:200



Fremtidige forhold set fra nordvest

